





## Contents

ACT I     Design Method

ACT II    Design Research

ACT III    Work Samples

## Preamble

This portfolio traces the narrative of **Thomas Dew-Jones** as a designer, as an architect.

The passenger will learn an appreciation for the multiplicity of meanings behind the drawing. Drawing as a way of seeing. Drawing as an investigative tool. Drawing as a spatial generator. Drawing as the driver of design development. Drawing is a process rather than a specific technique.

Models, hand drawings, Autocad, Sketchup, or Revit occupy a position within his design process.

ACTA

DESIGN METHOD

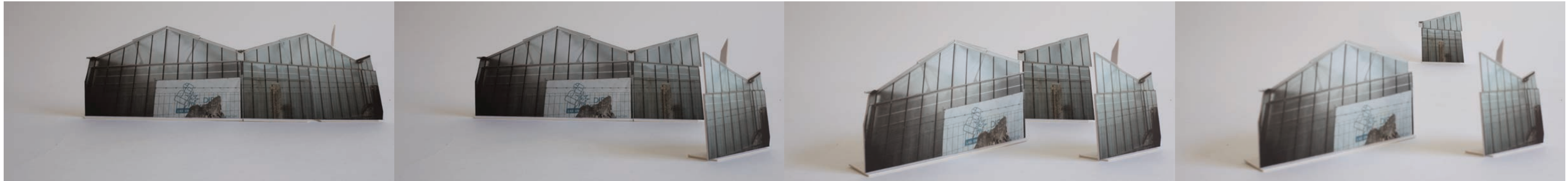
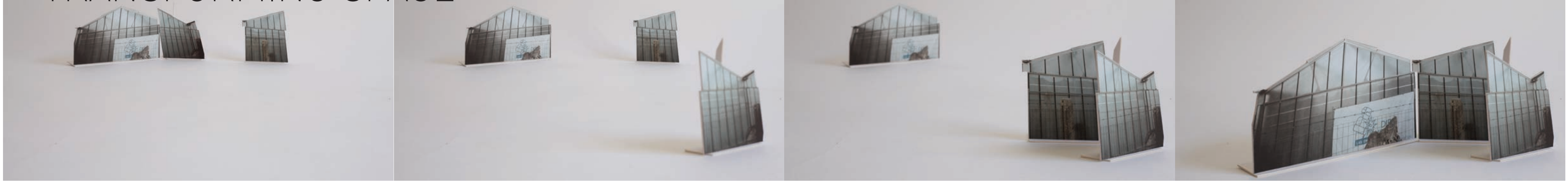






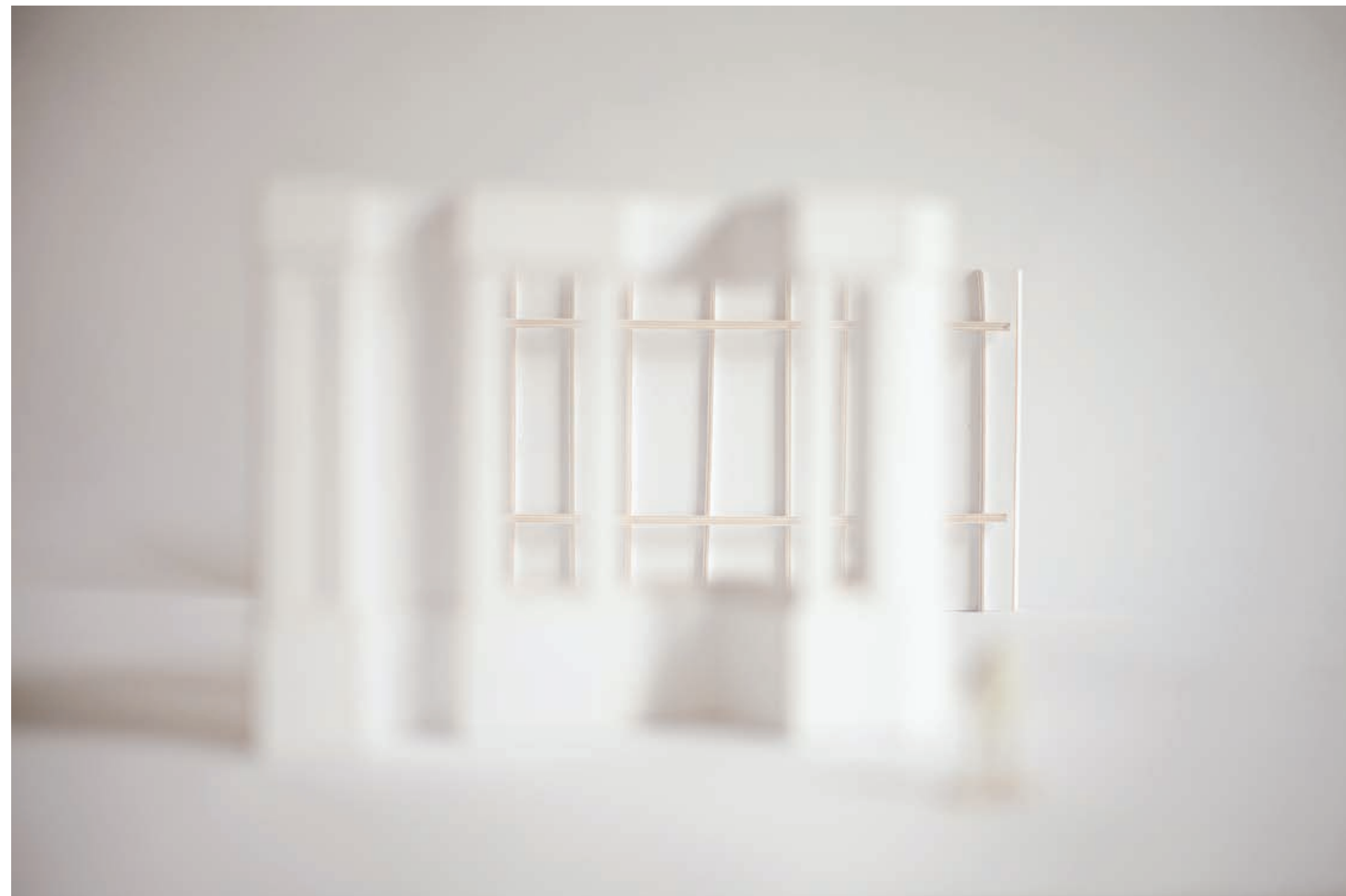
Taking what is there;  
Begin with the whole.  
Find the fissure to  
Look past the surface.  
Speculate about the inner workings,  
as the pieces find new connections.  
Pull the pieces apart and let space emerge from within.

# TRANSFORMING SPACE



# A FIRST LOOK

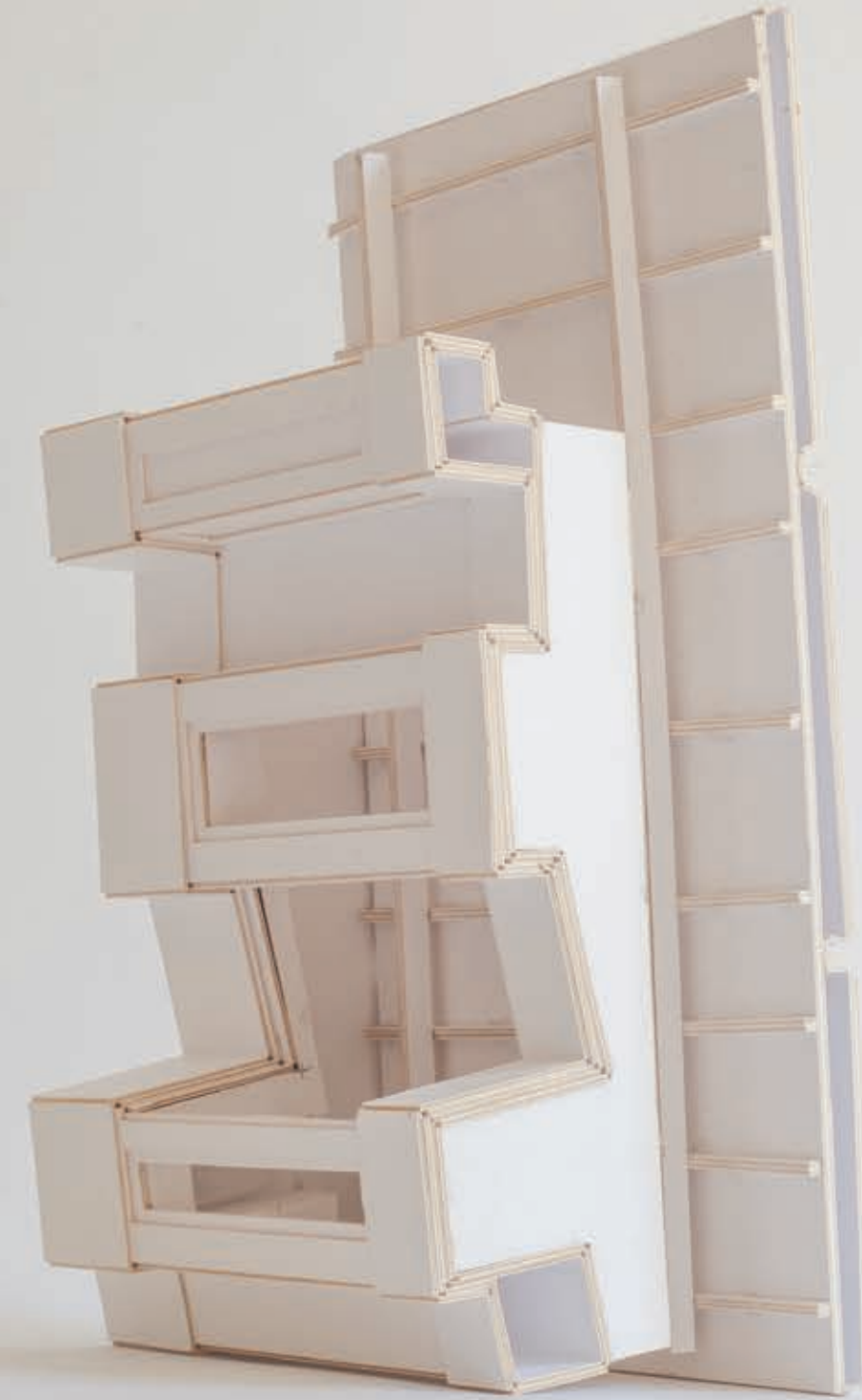
contradictory elements position themselves equally, as opposites  
peer past the surface, investigate the within.





# RE-LOOK

take a double look,  
a traditional way of building becomes a novel construction



# DEDUCE

Finish the surface  
Flatten the space  
Find a texture in the grain  
Take the whole and deduce to a piece.



# INDUCE

One detail from the texture becomes the whole  
induce the nature of things  
things emerge from the grain



RE-CONSTRUCT





# DE-CON S T R U C T





MULTIPLY

MULTIPLY

MULTIPLY

MULTIPLY

MULTIPLY

MULTIPLY

MULTIPLY

MULTIPLY

MULTIPLY

INTERMISSION

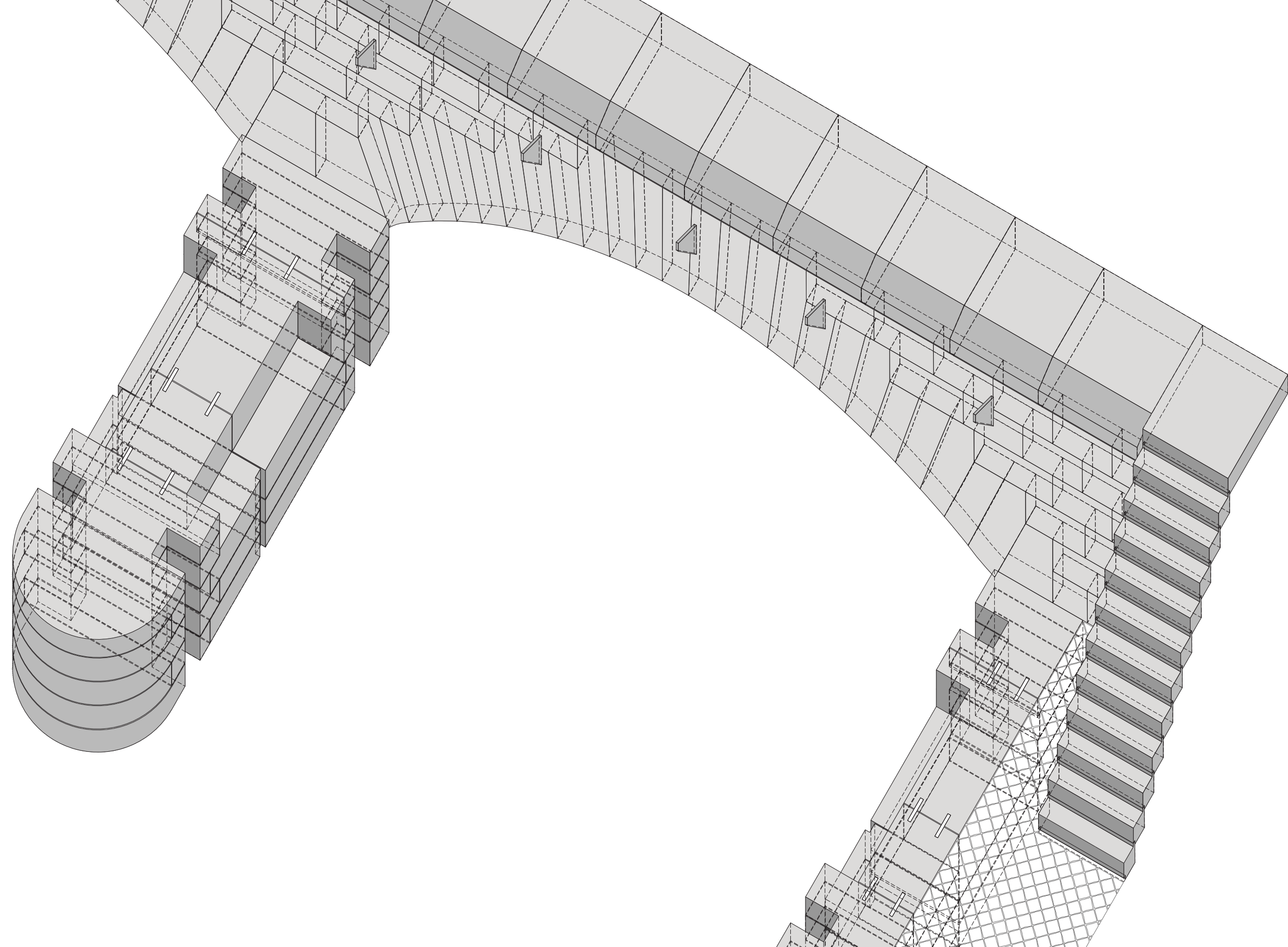
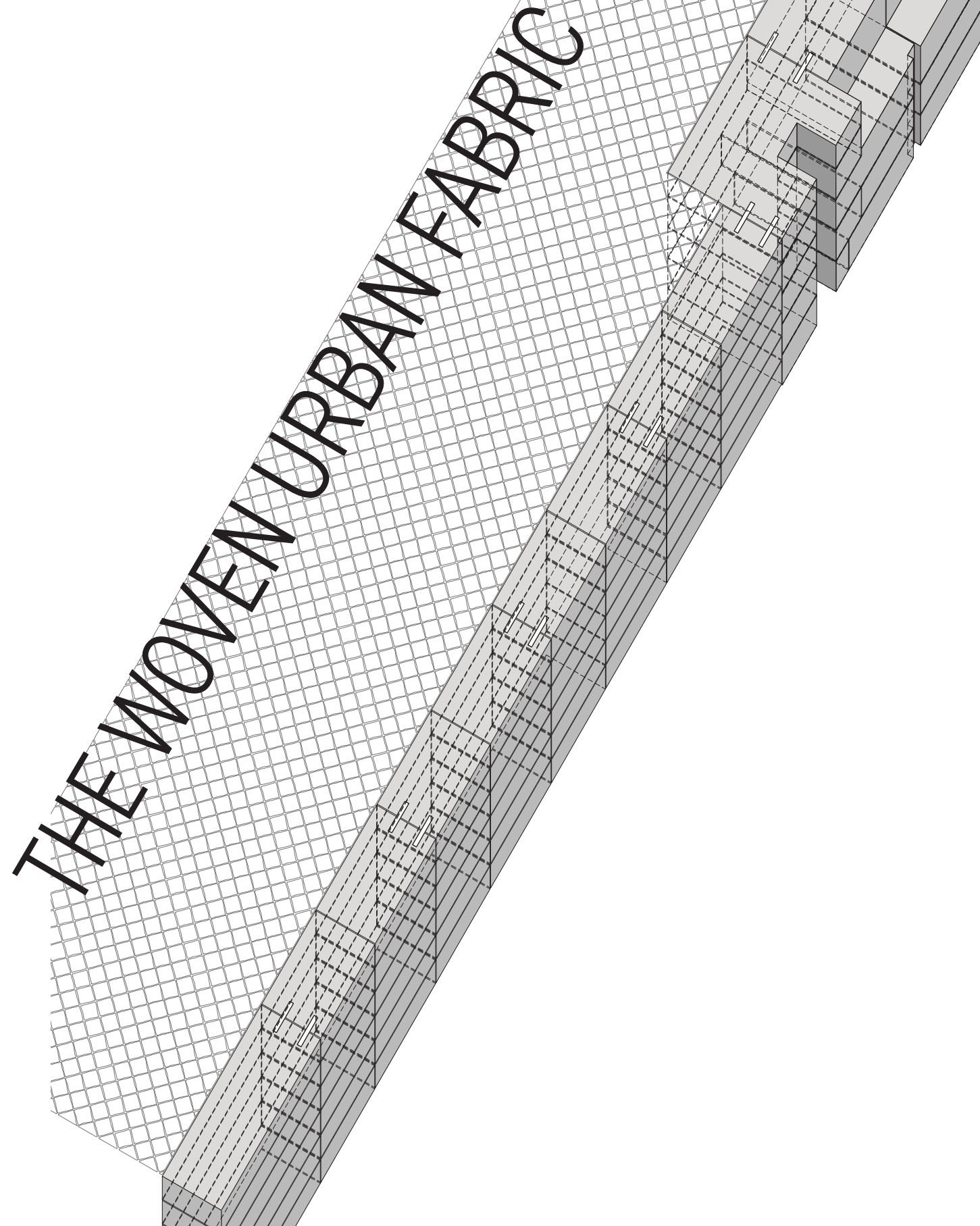


# SETTING THE SCENE

Break apart the material and undo the assembly  
Reveal anthropological evidence  
The Memory of a place now forgotten  
A people now changed, in an endless cycle  
Materials and traces blend together  
Intangible qualities of place  
Unravel the material construction  
Search for a manifested reality of place.









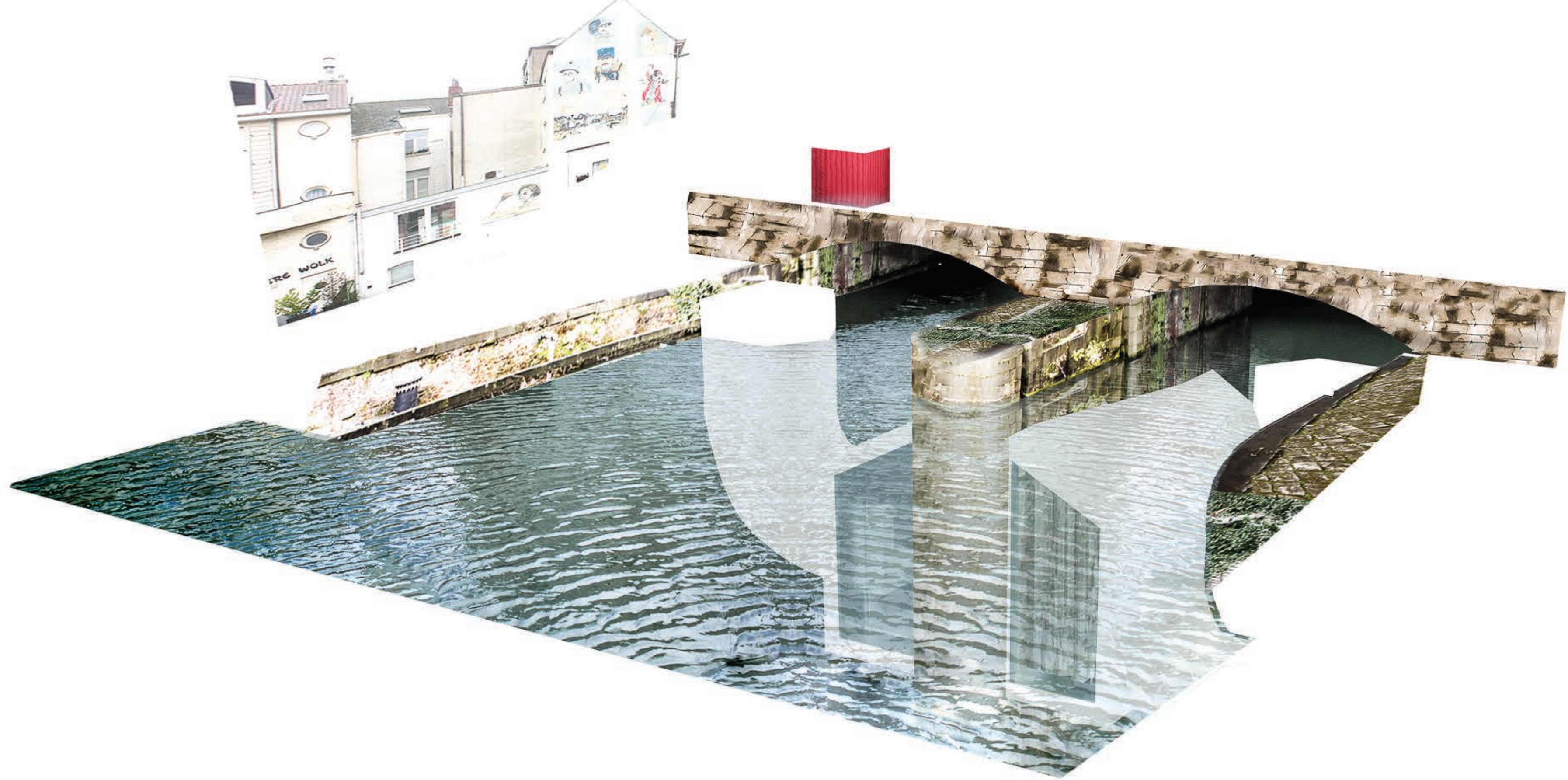


# THE EVENT

The material event emerges;  
its a contradiction in space.  
A juxtaposition of materiality when discovered in the  
existing condition.  
The spatial condition tears through the otherwise banal  
urbanity.









ACT

RI

DESIGN RESEARCH



# PERCHED ATOP THE BASTION OF STONE

The temple of Victory: Athena/Nike.

Master Thesis, KU Leuven, 2022, Sint-Lucas Gent

advisors; Thierry Lagrange, Jo Van Den Berghe

Researching the Acropolis in Athens,

The history of human civilization

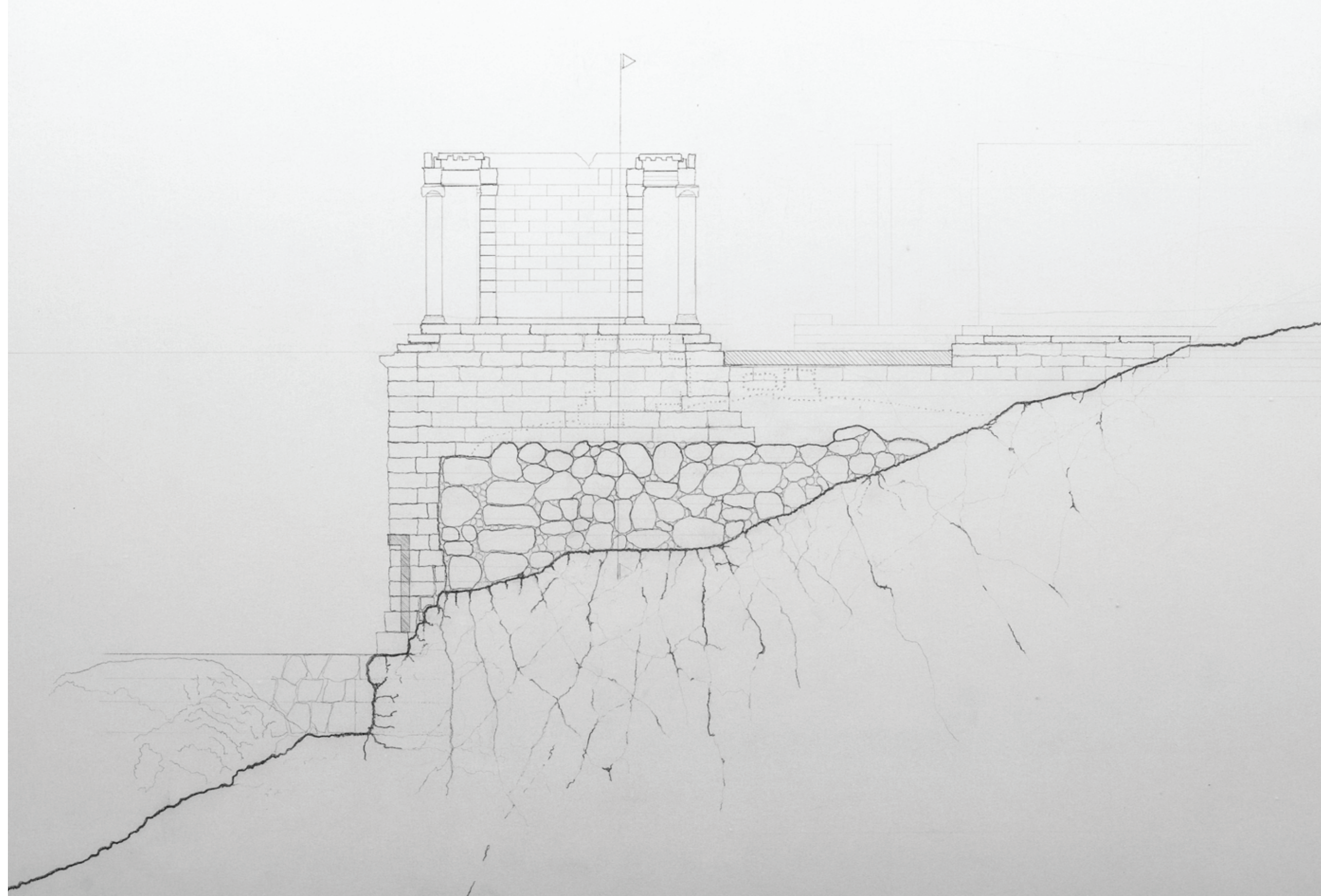
Anthropological, archeological explorations



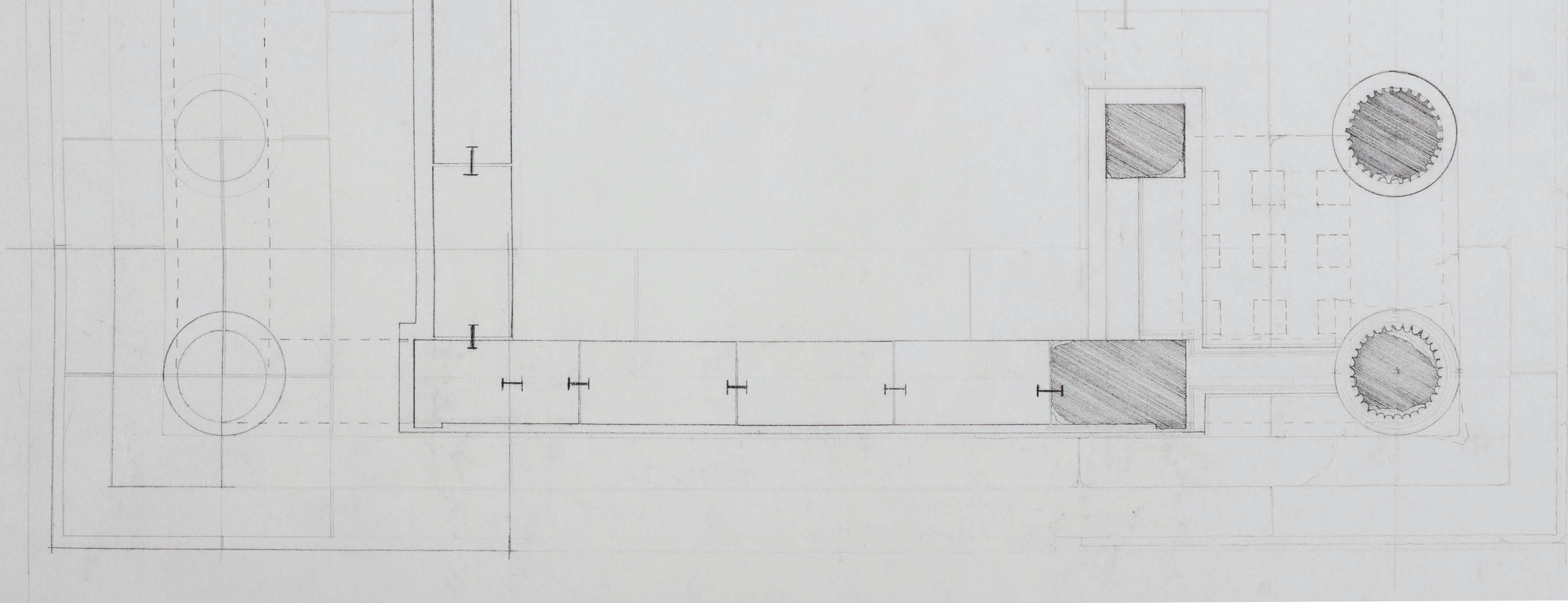


# TAKE A LOOK

investigate the site  
observe the visible form  
landmark the hillside  
build up side under and around









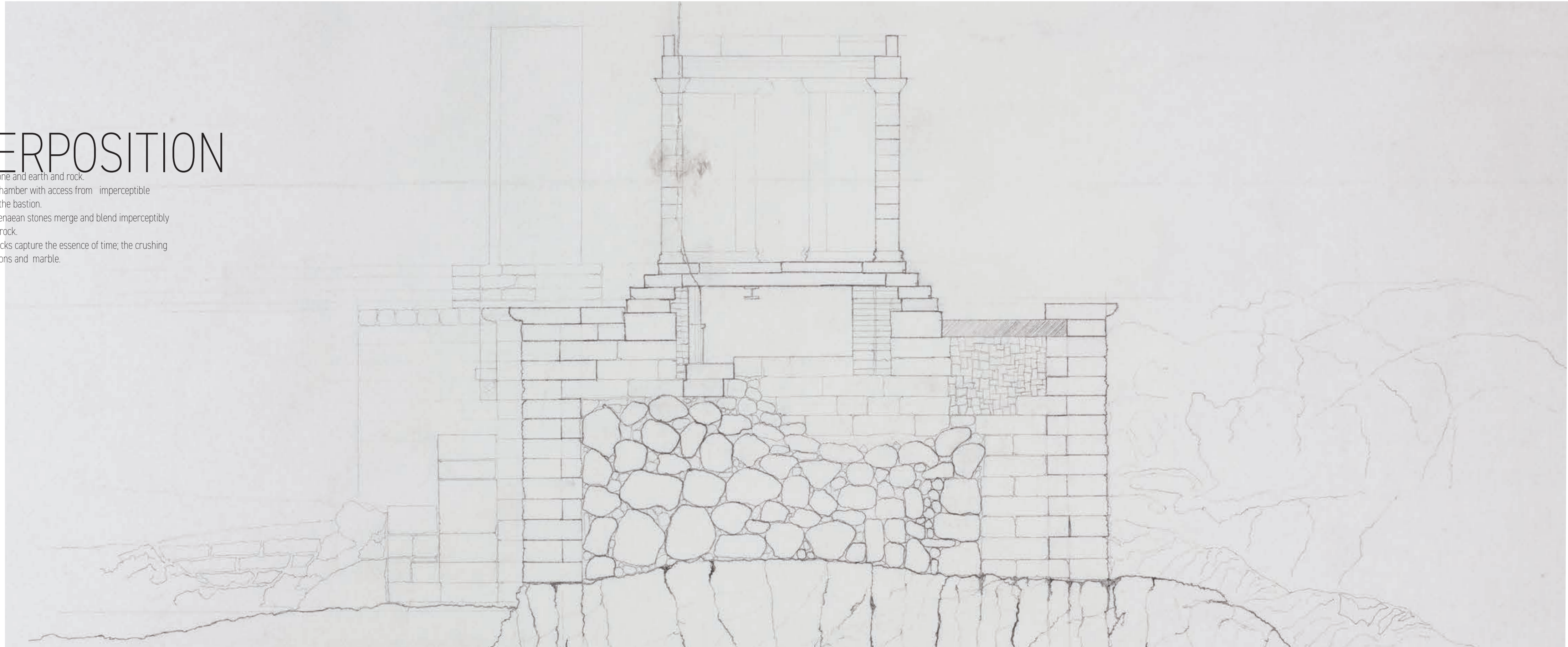
# SUPERPOSITION

Layers of stone and earth and rock.

The secret chamber with access from imperceptible openings in the bastion.

Ancient Mycenaean stones merge and blend imperceptibly with the bedrock.

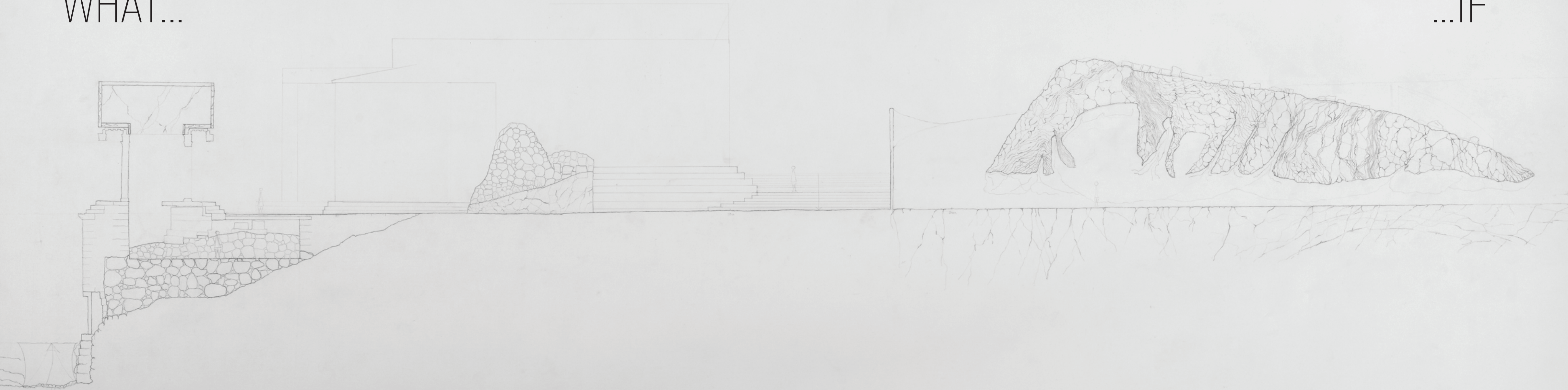
Even the cracks capture the essence of time; the crushing weight of aeons and marble.





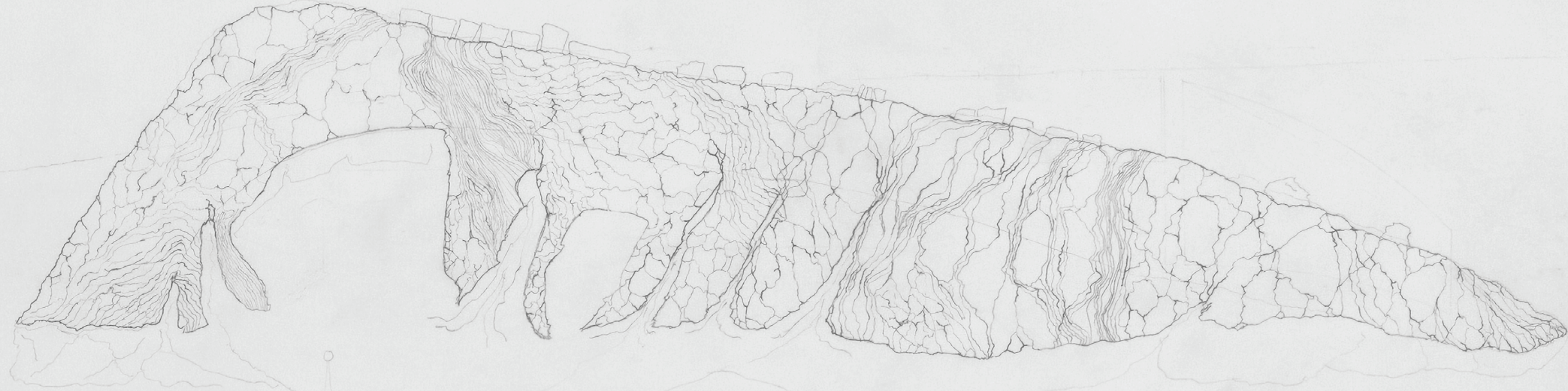
WHAT...

...IF





LOOK AGAIN

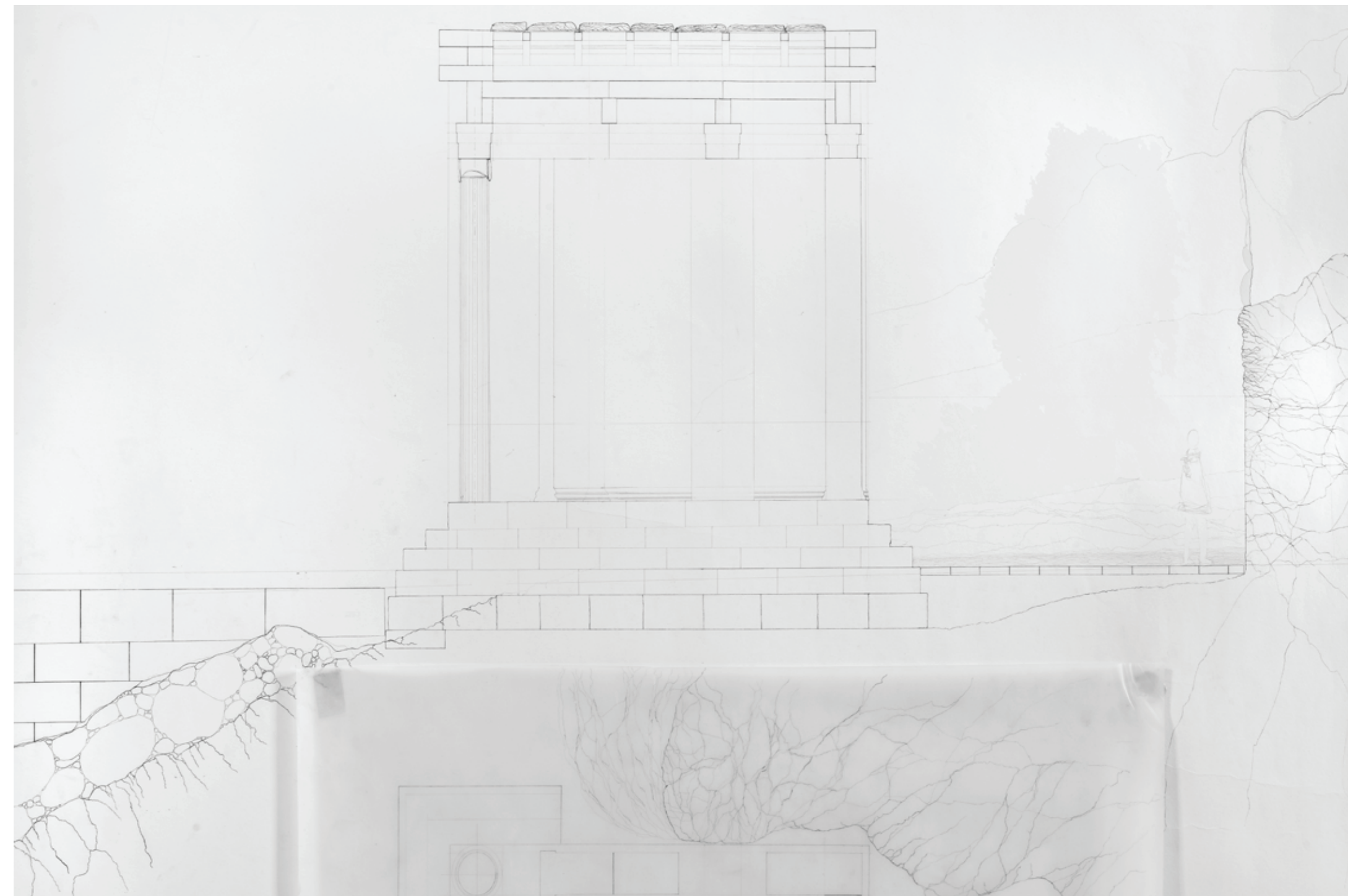




The quarry becomes the site  
The craftwork dialogues with  
The bedrock, the existing.







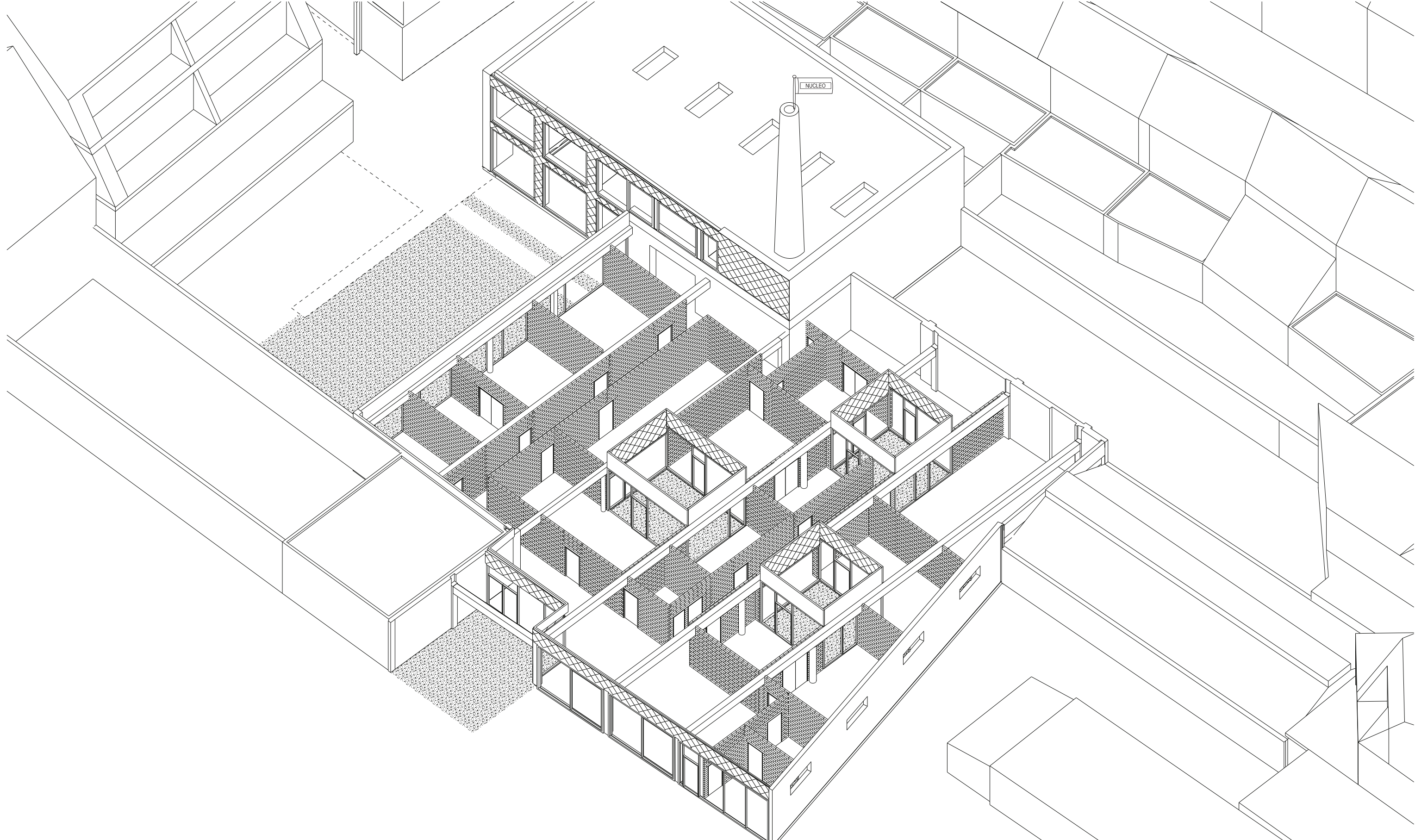


ACTR

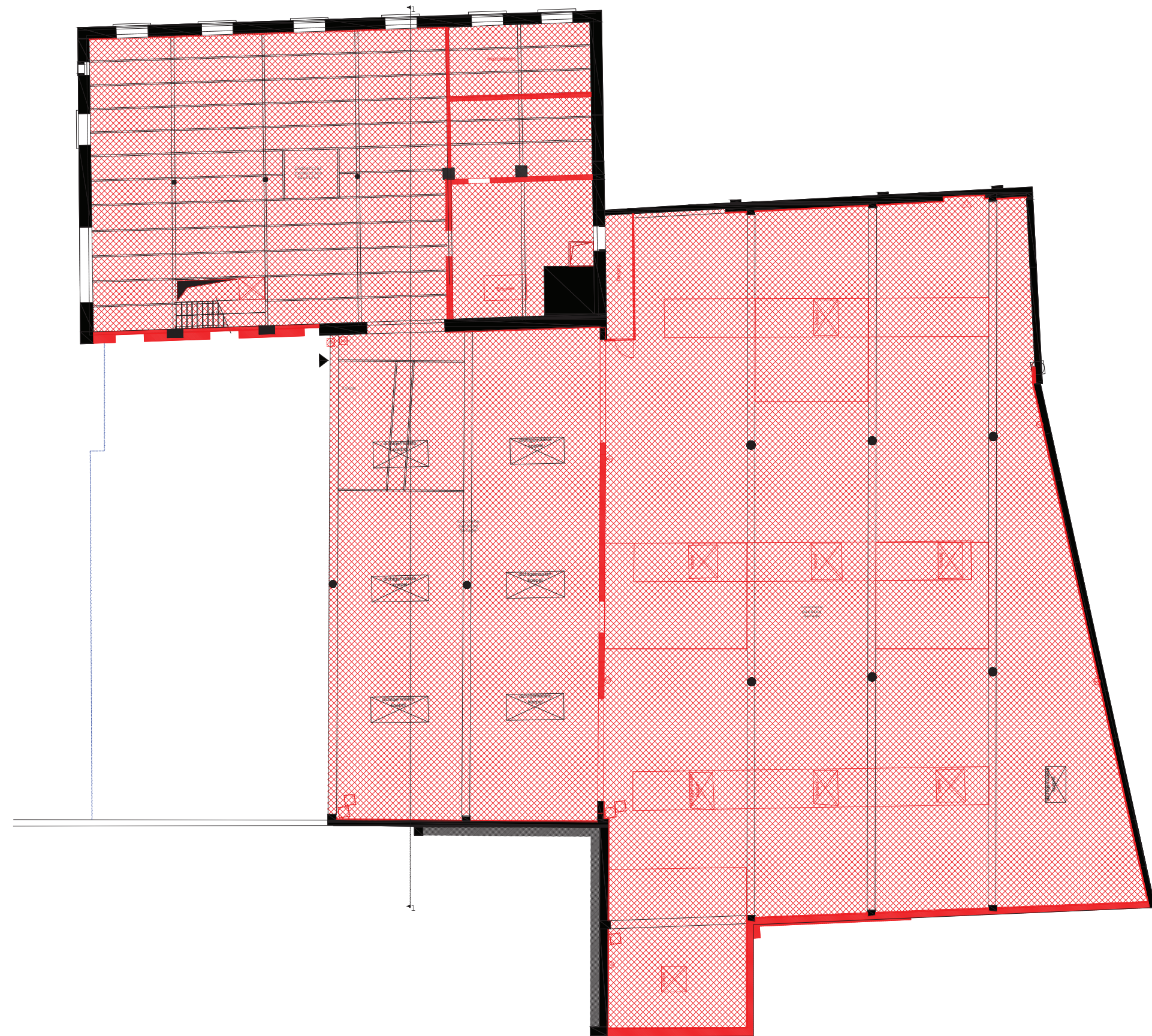
WORK SAMPLES

# TRANSFORMING AN INDUSTRIAL BUILDING INTO ARTIST STUDIOS FOR NUCLEO

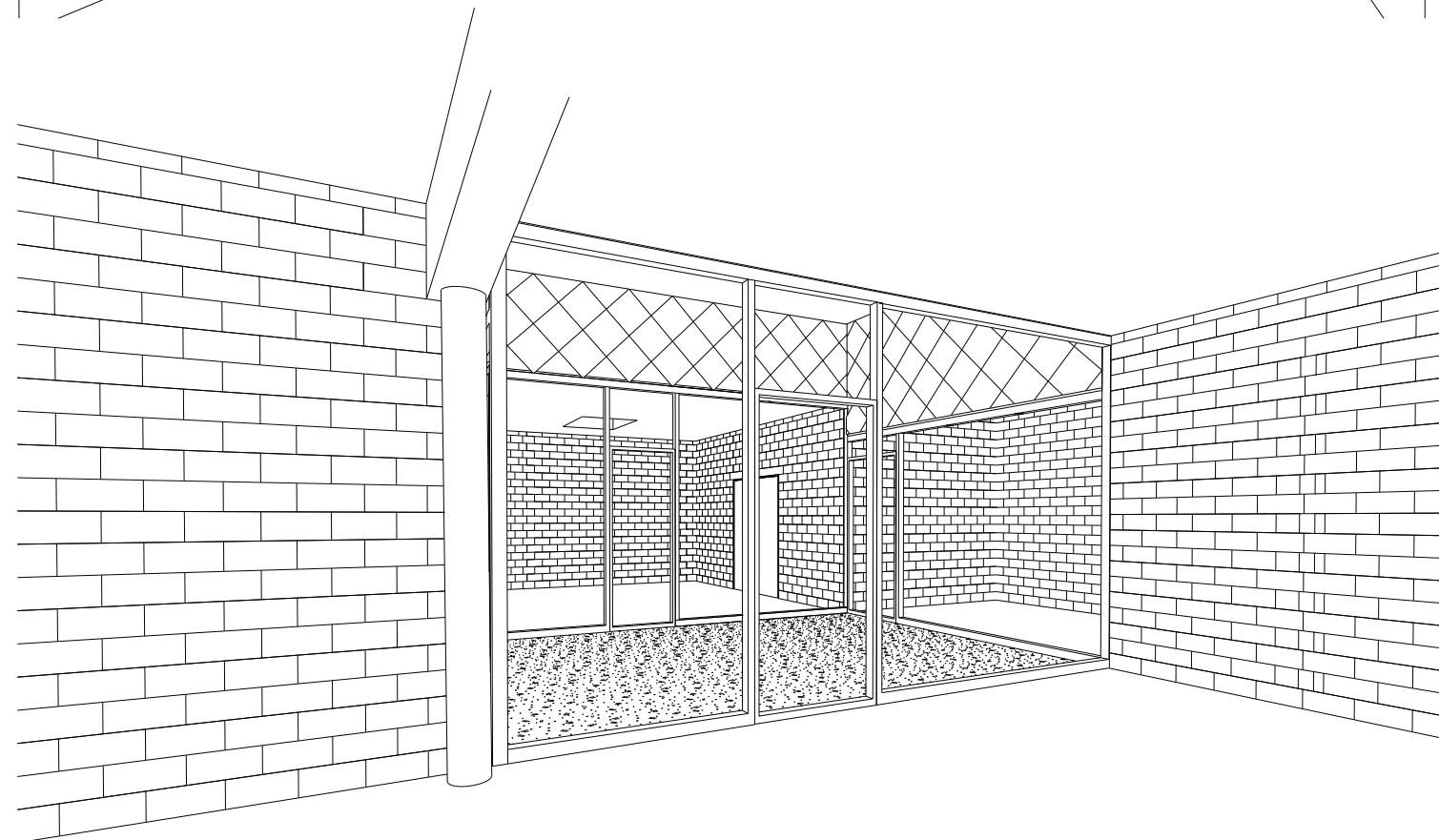
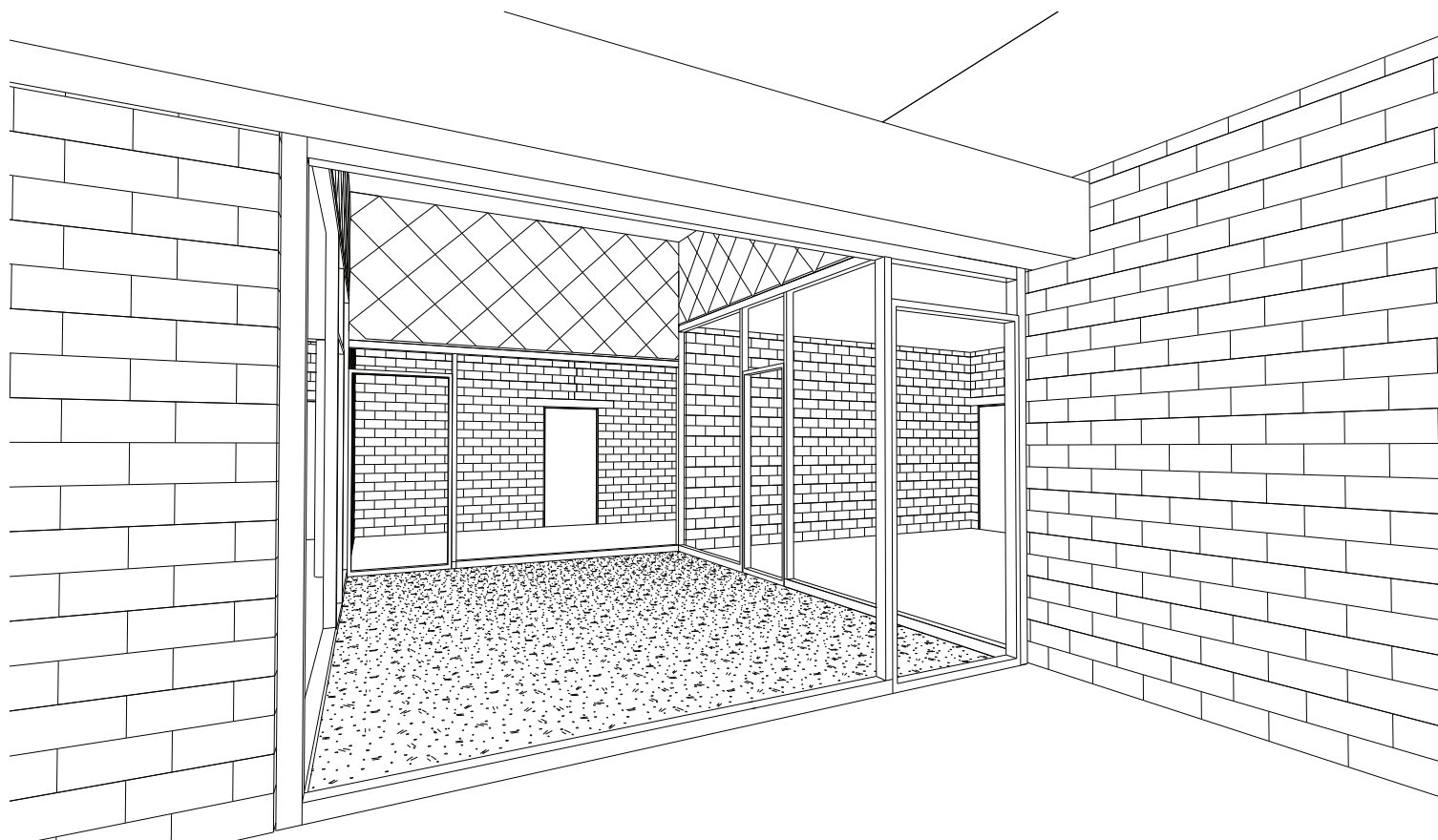
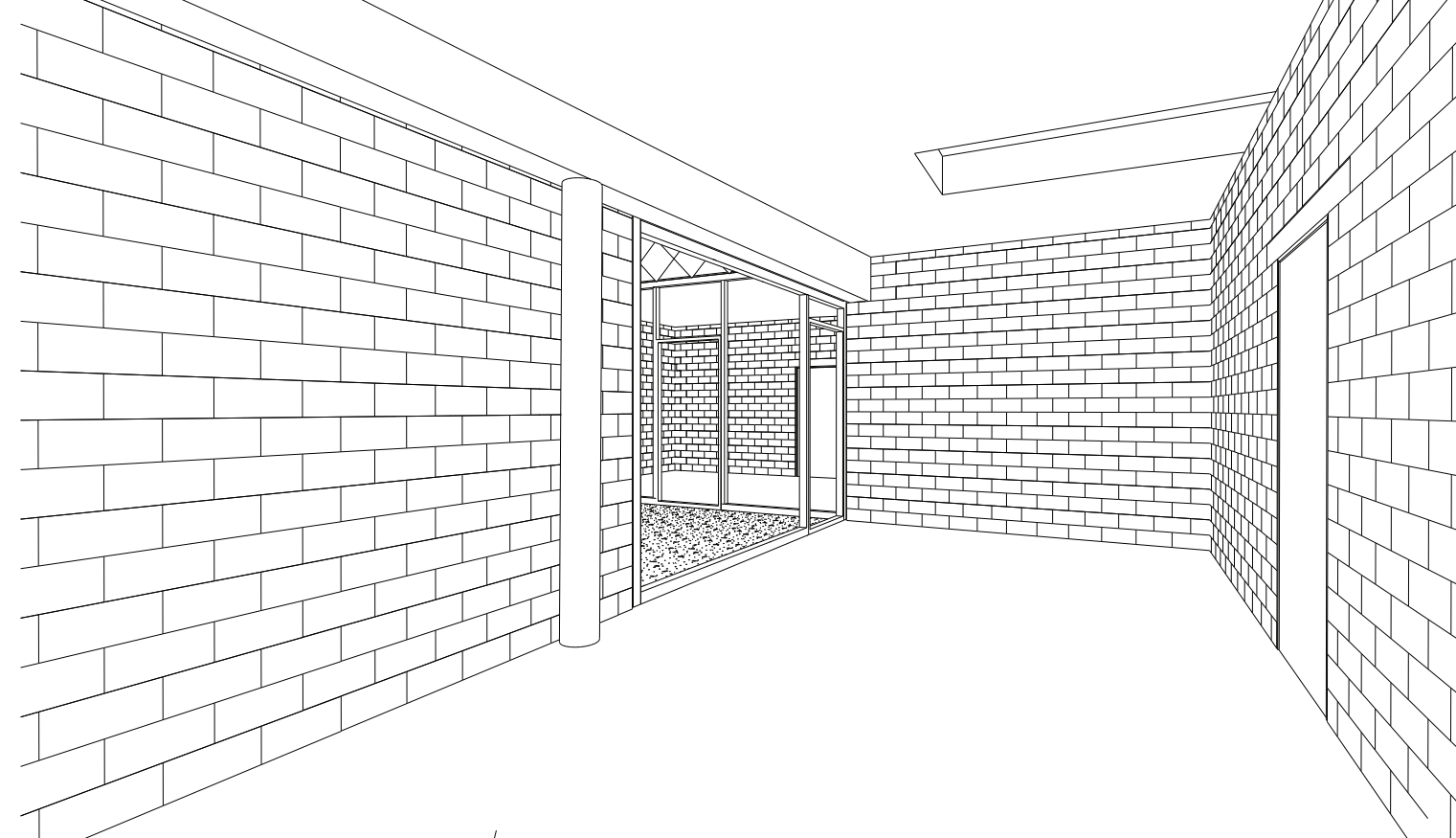
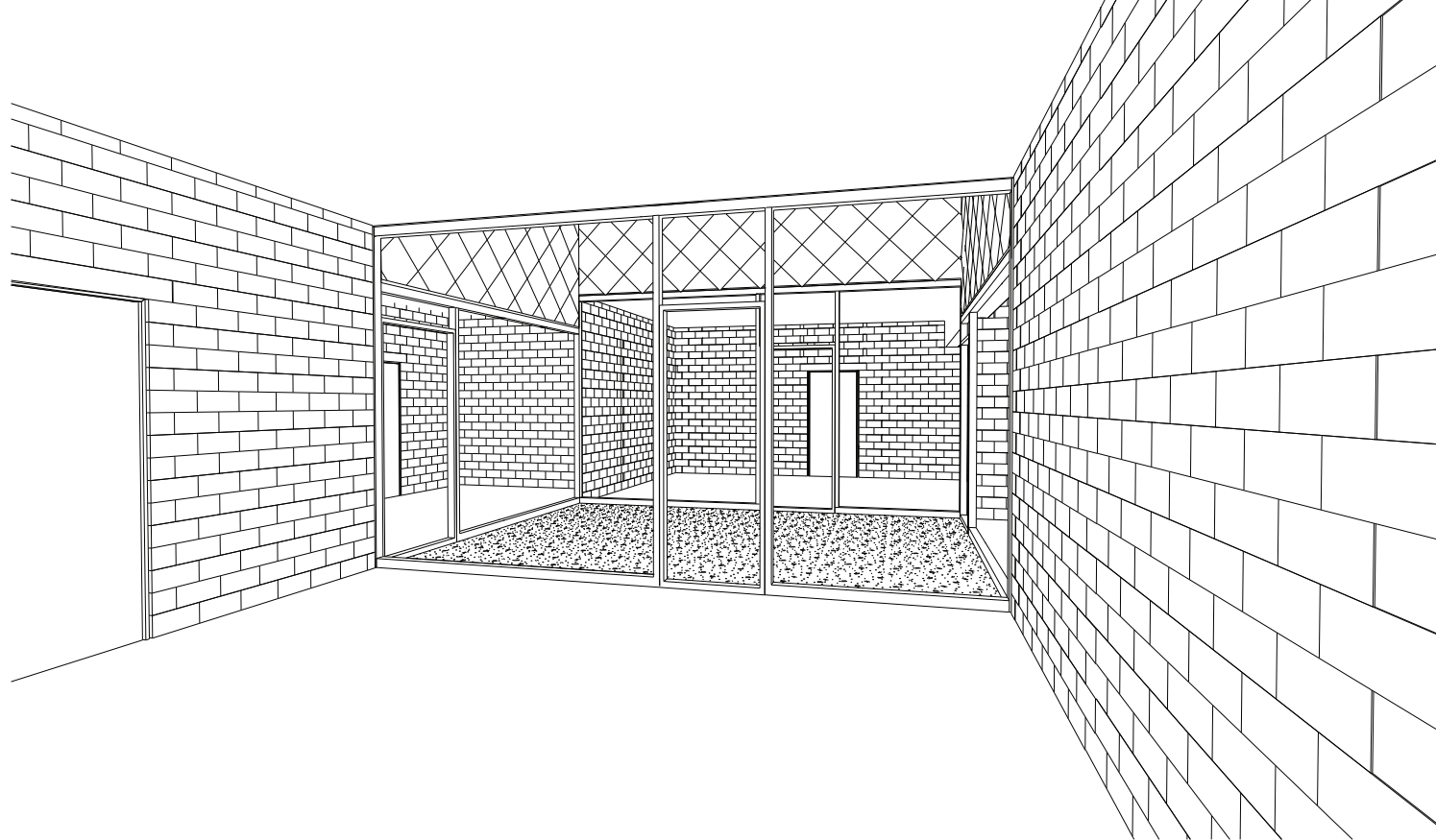
Work For Thierry Lagrange, ALT Architectuur.  
NUCLEO, 2024  
Adapting an industrial building into a studio space for artists in  
Gent, Nucleo.









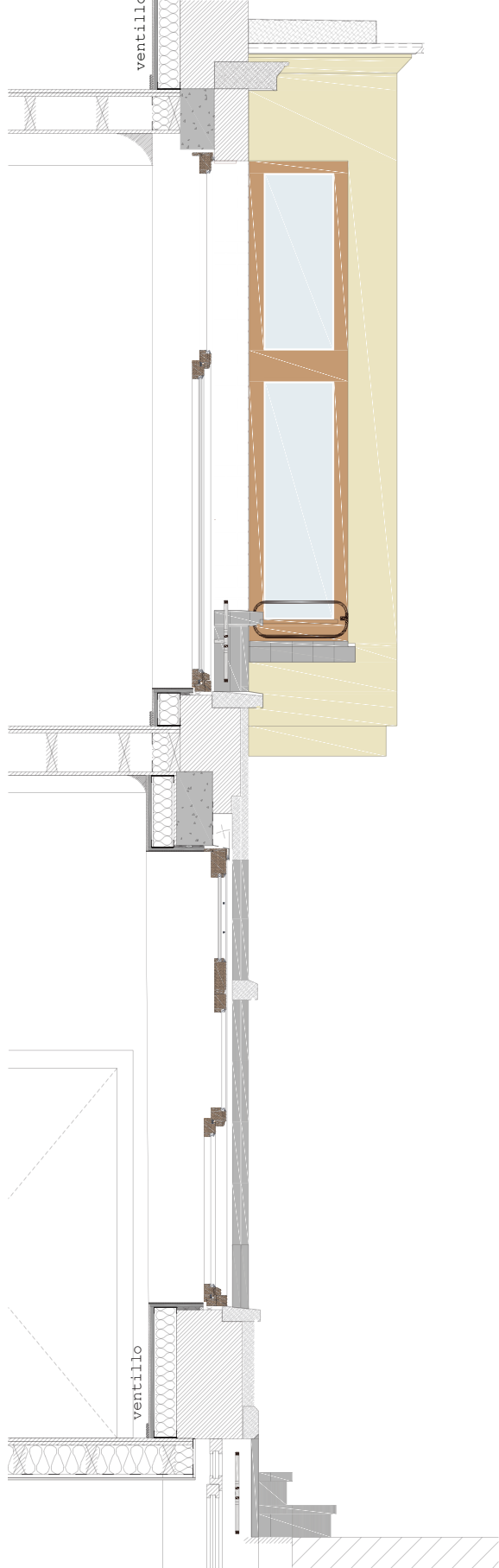


# RESTORATION OF A HISTORICAL FACADE

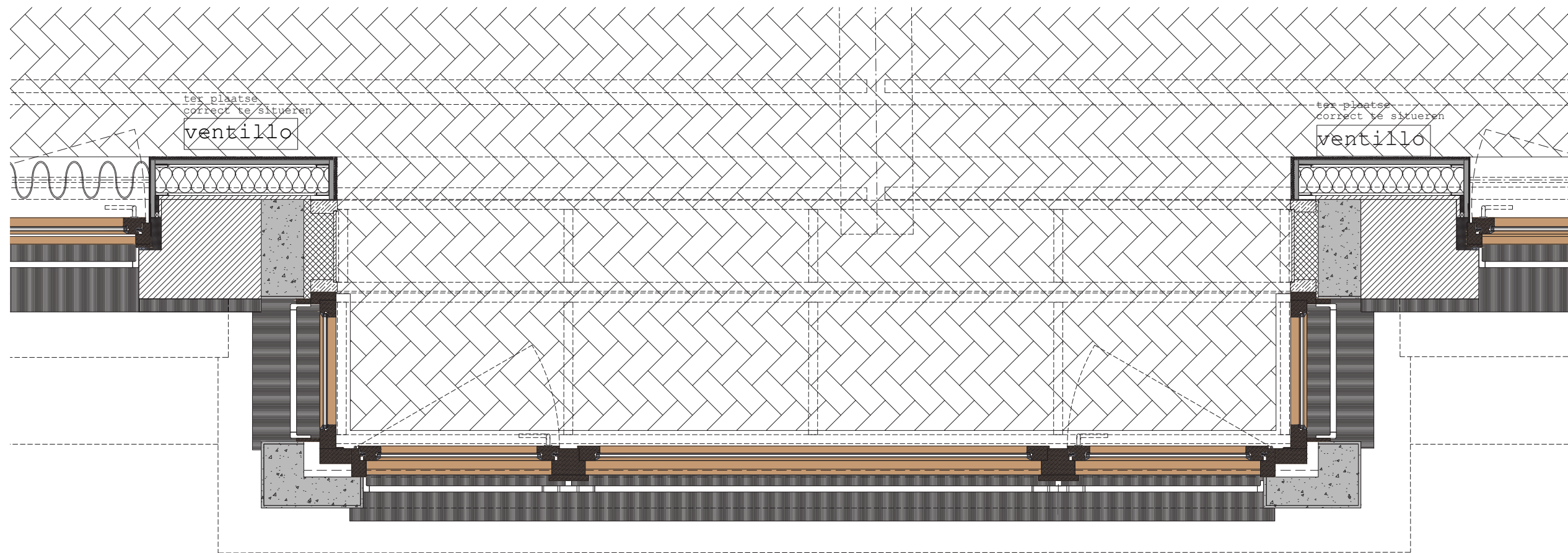
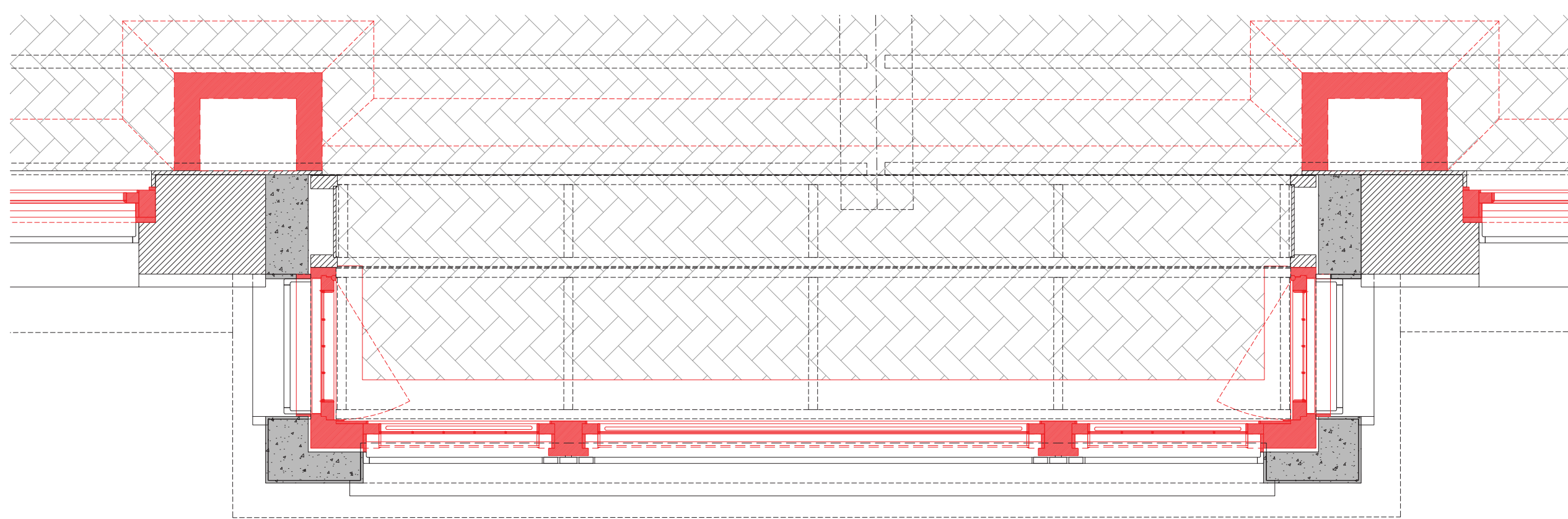
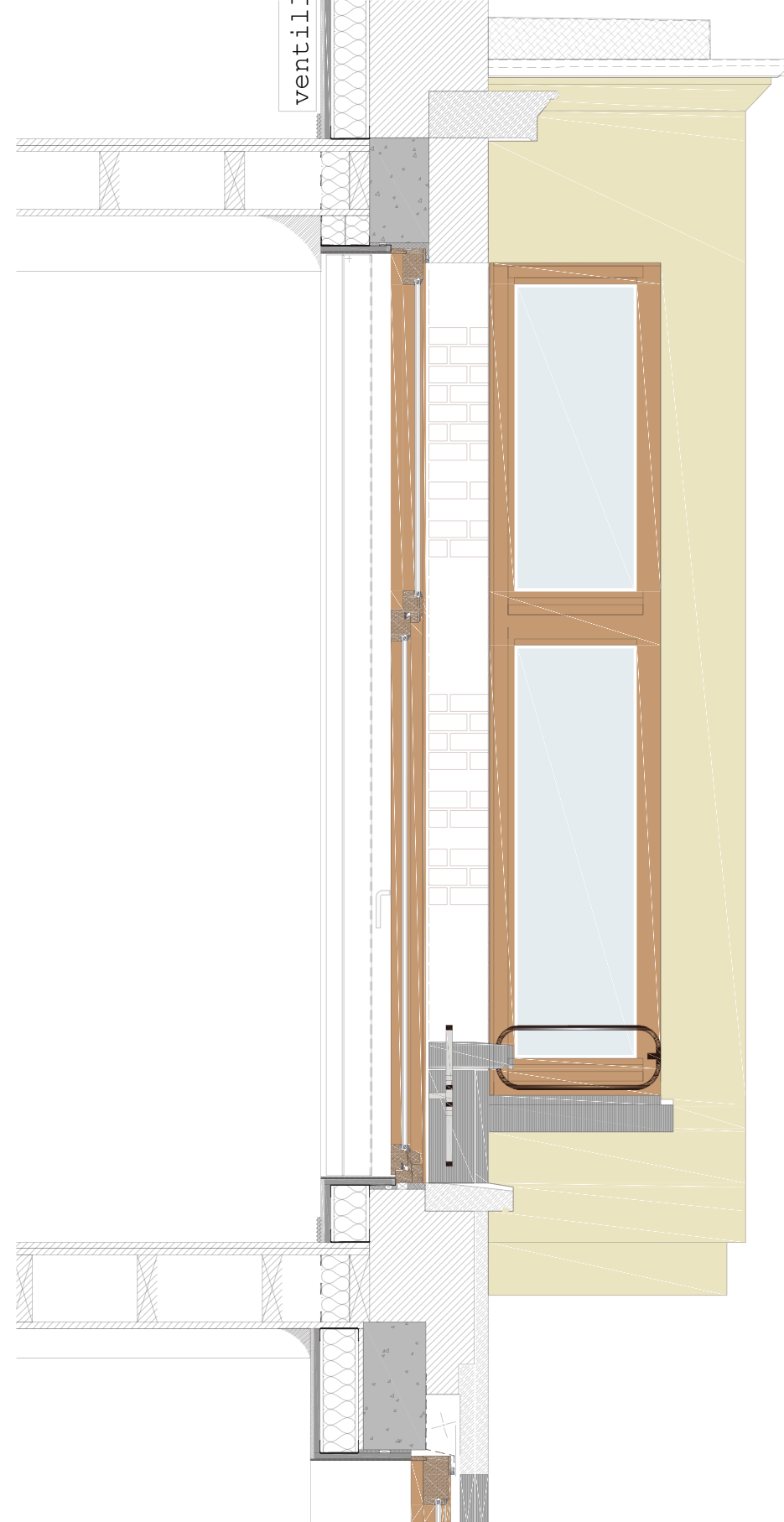
Work For Thierry Lagrange, ALT Architectuur.

Bernard en Gerda, 2024

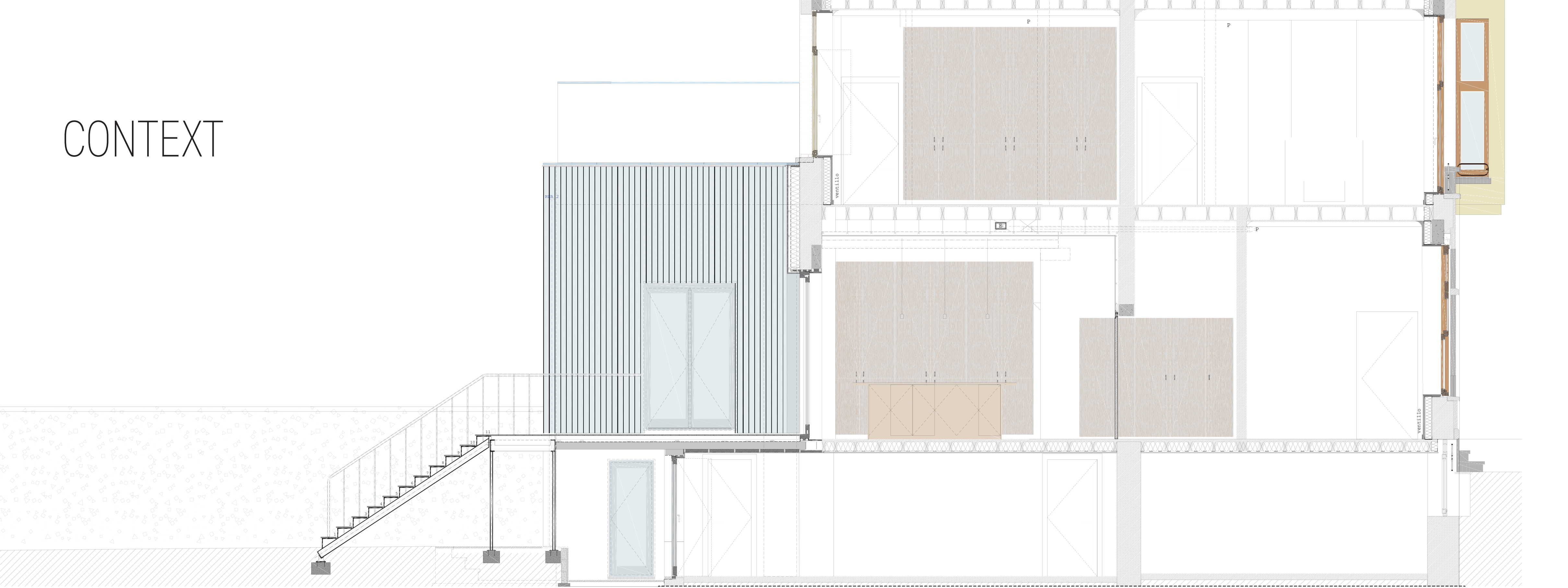
Renovation of a Herenhuis in Gent, the coupure, with a historical facade and Erker.

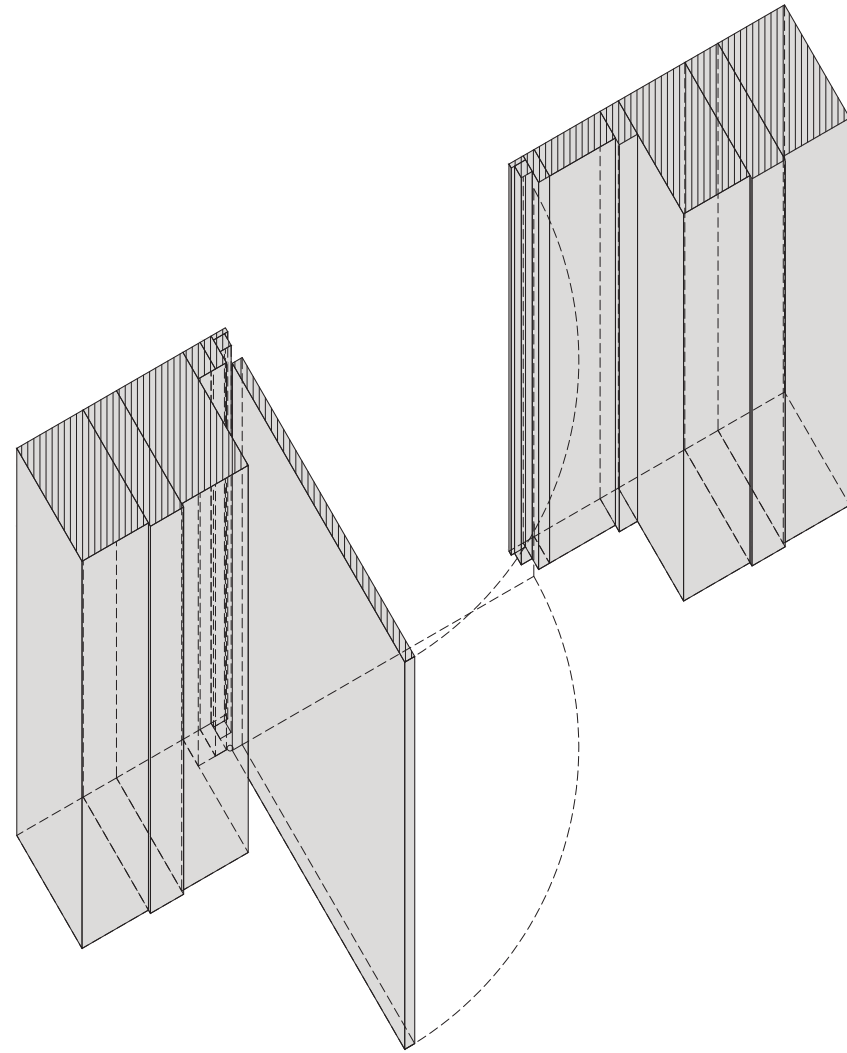
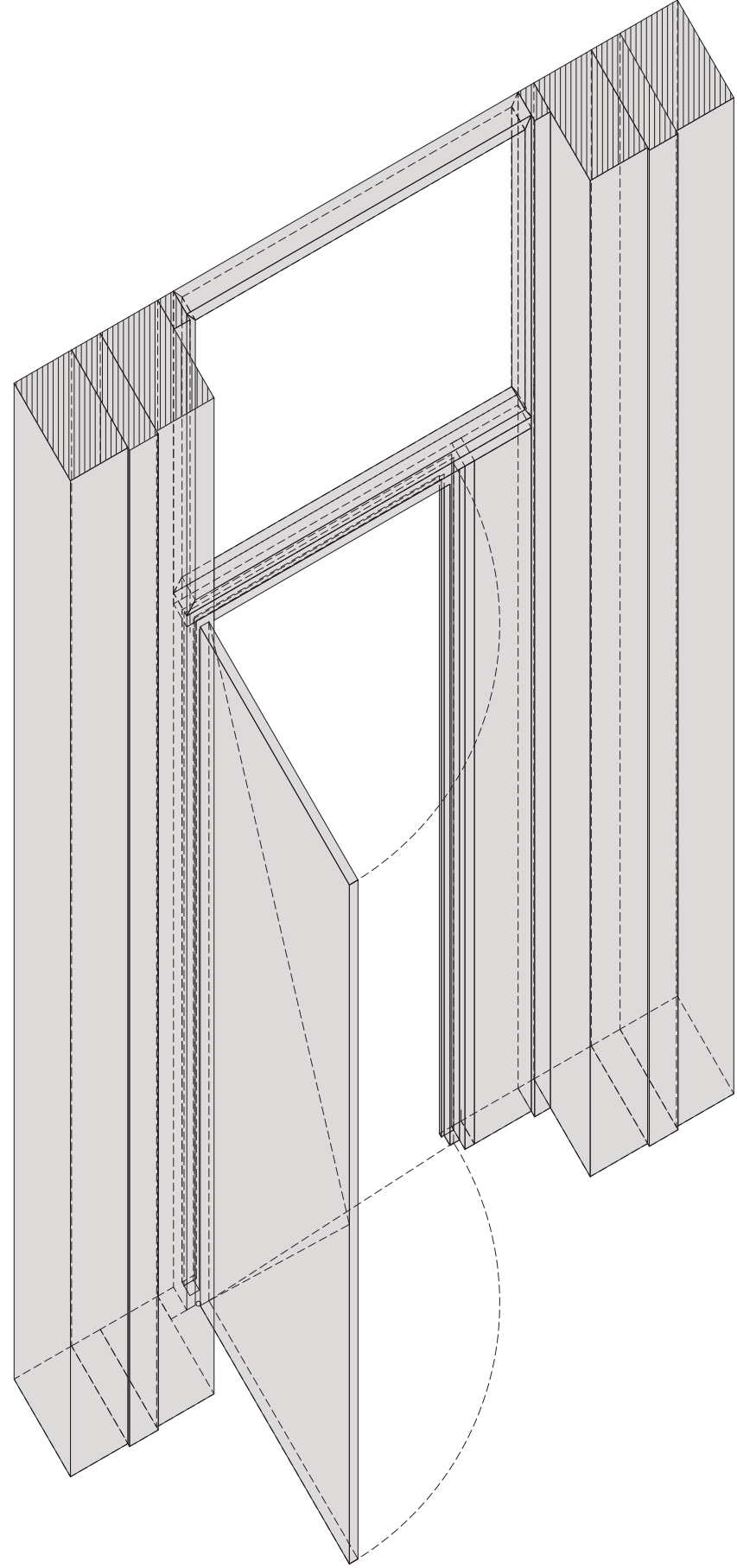






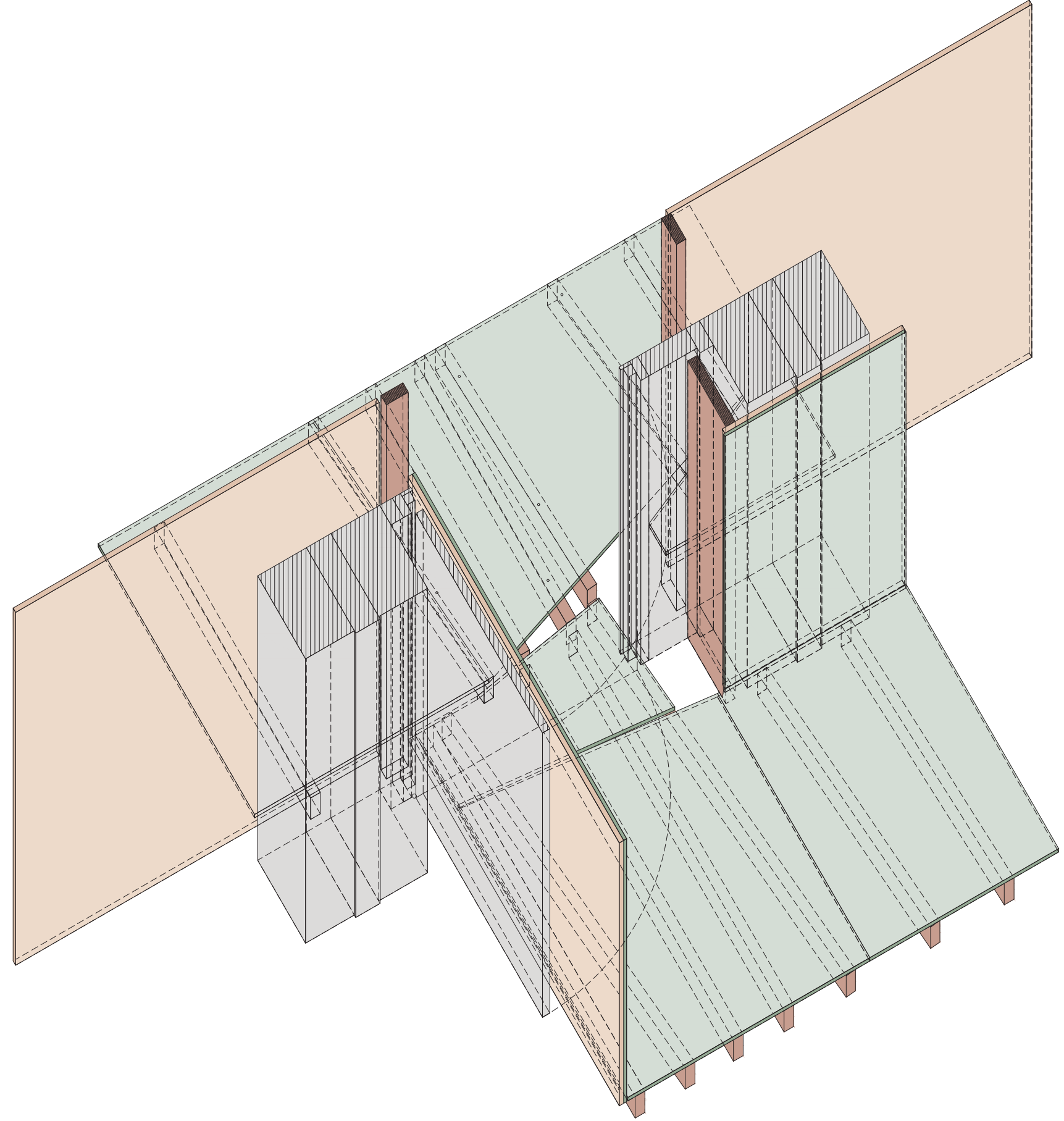
CONTEXT



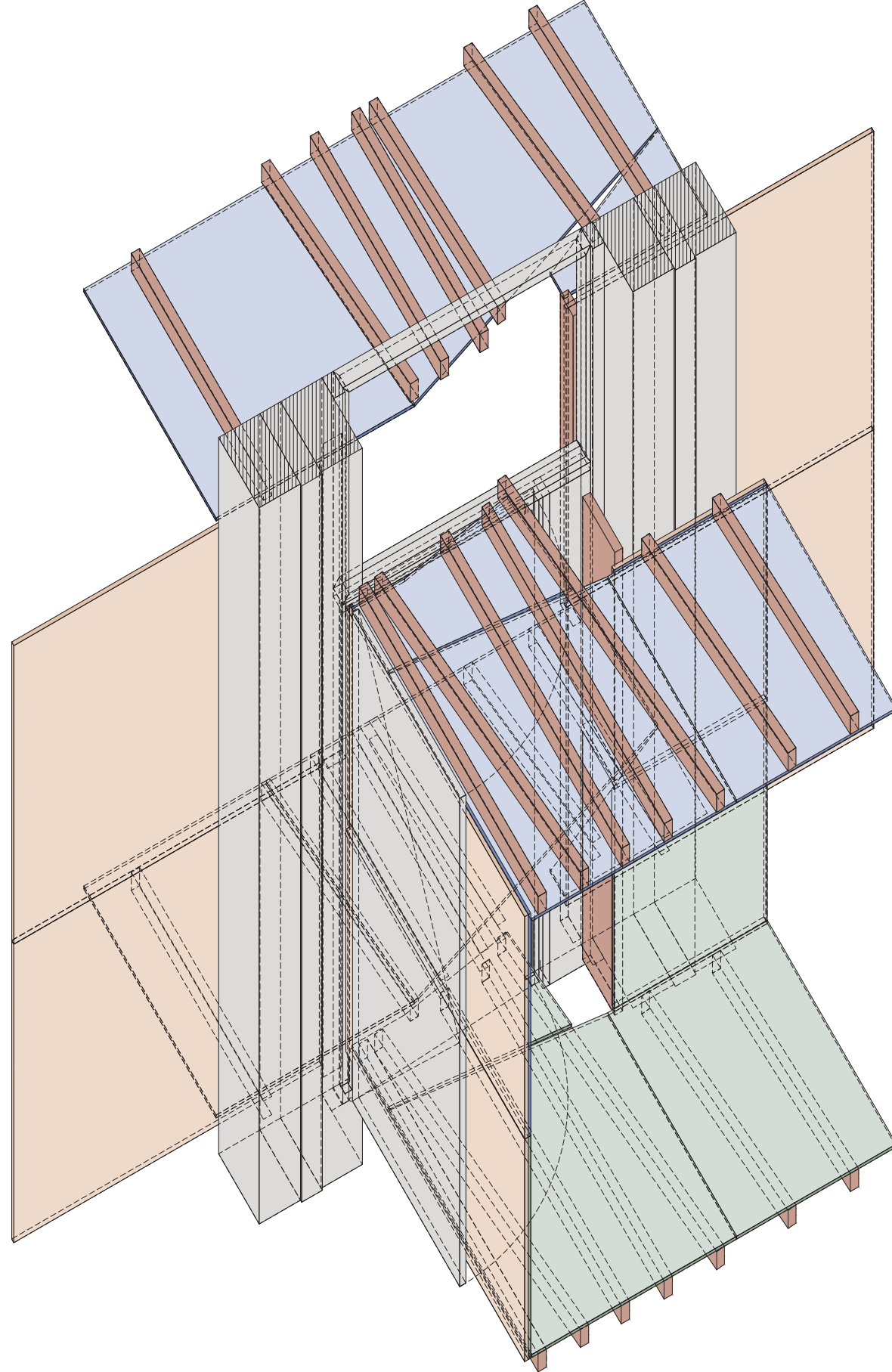
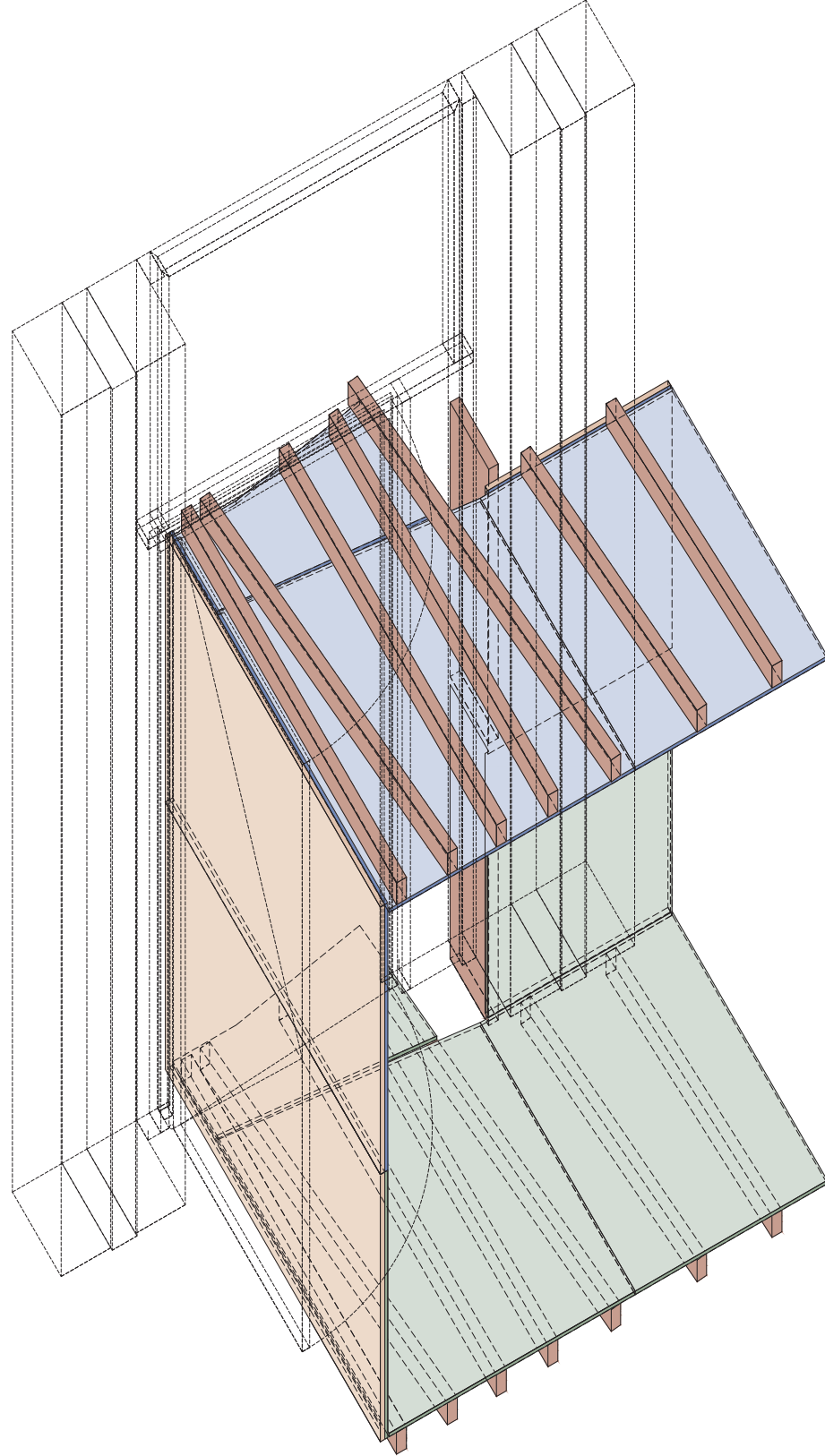
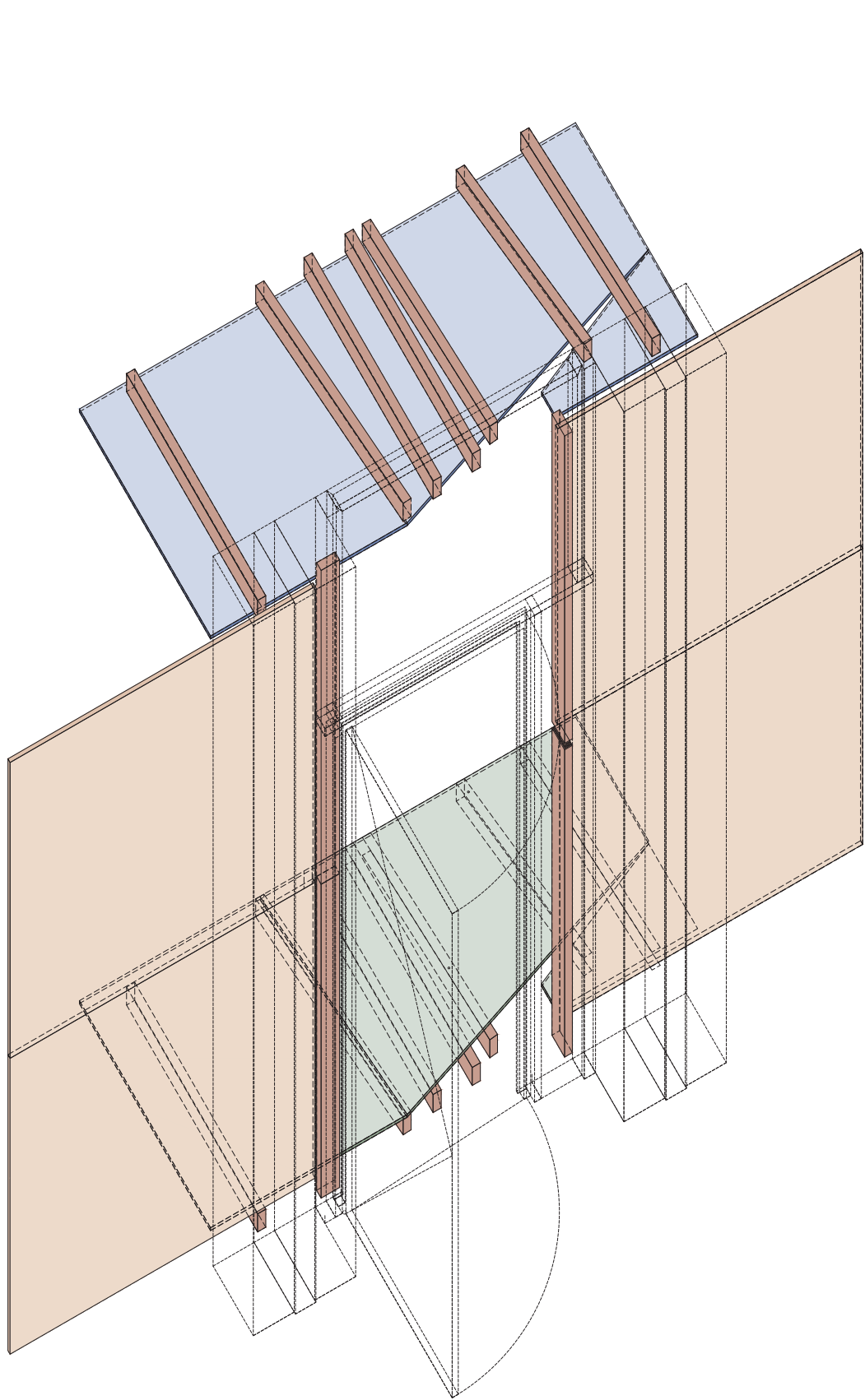


# HANS' DEUR

Work For Thierry Lagrange, ALT Architectuur  
Published in Cut Down, Build up the book and the  
exposition. 2024.







## CREDITS

act 1:	Studio the Double Look, KU Leuven, gent, 2021. Prof; Thierry Lagrange, Dimitri Vangrunderbeek.
intermission	Studio Manufactured Urgencies, KU Leuven, gent, 2017 Prof; Riet Eeckhout.
act 2:	Master Thesis, KU Leuven, gent, 2022. Prof; Thierry Lagrange, Jo Van Den Berghe.
act 3:	Work experience with Thierry Lagrange, 2022-2024 for fullfillment of Architecture internship in Belgium.



